



Lack of existing vegetation to provide any screening of huge stockpiles and/or debris from operations

Upward sloping and barren land.



Proposed site slopes upward from road. Berm size, vegetation and plantings to hide operations and stockpiles?



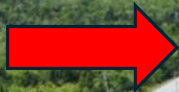
Upward slope with low ground cover.



Dead trees due to wetland expansion.



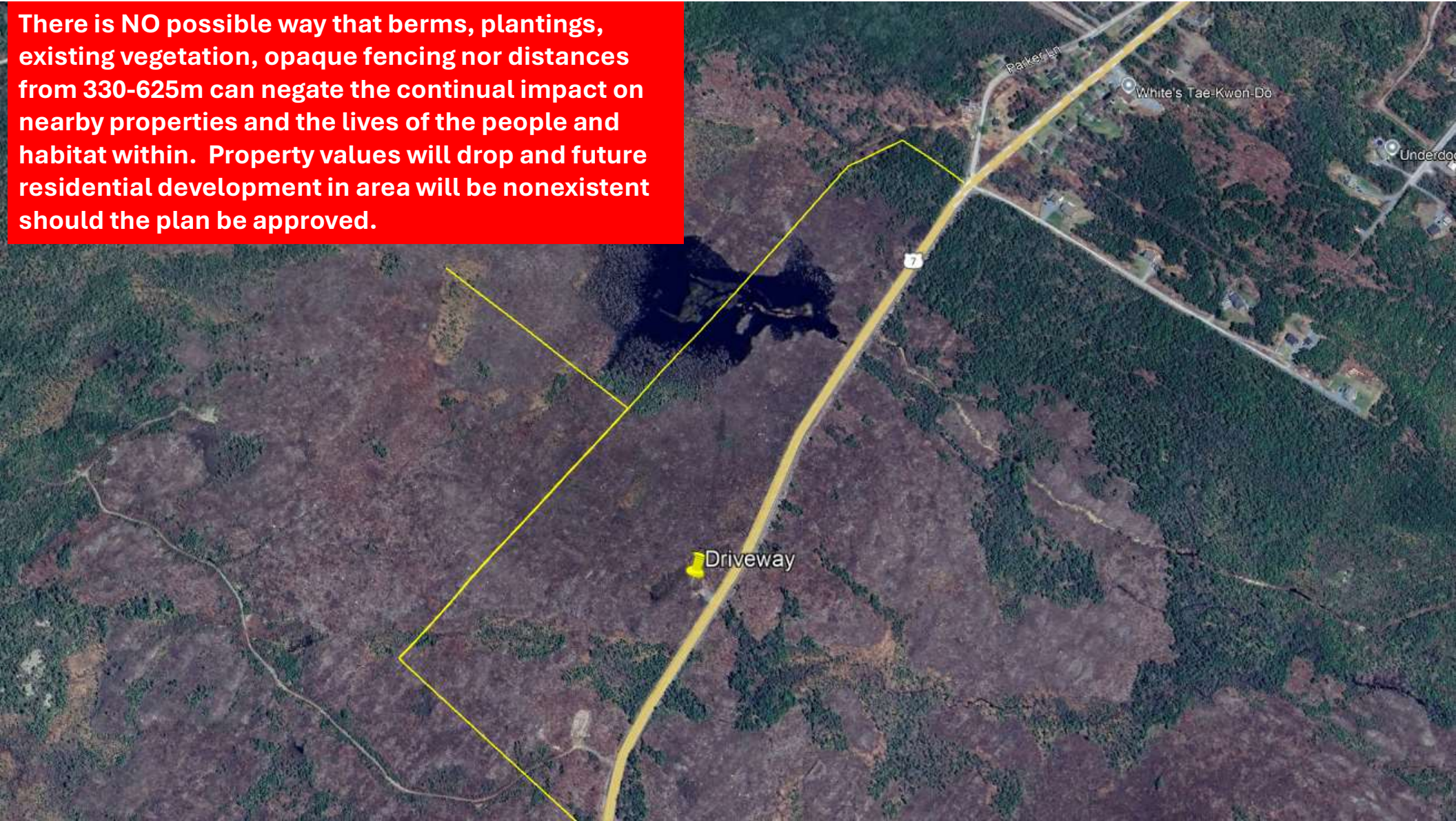
**Driveway
location**





Wetland overview

There is NO possible way that berms, plantings, existing vegetation, opaque fencing nor distances from 330-625m can negate the continual impact on nearby properties and the lives of the people and habitat within. Property values will drop and future residential development in area will be nonexistent should the plan be approved.



We urge you to vote NO. This is not the place for a C & D processing facility. Our community and residents deserve better.

